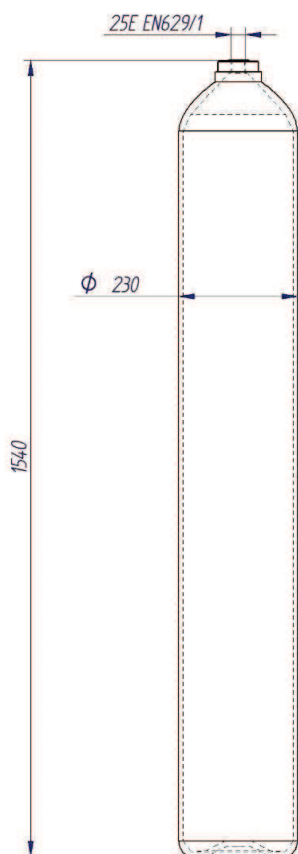


SINGLE BOTTLE



DESCRIPTION	Working Pressure	CODE	Price
BOTTLE 50L. 300 BAR TPED	300 bar / 4350 psi	PA011-002	--,- €
BOTTLE 50L. 350 BAR TPED	350 bar / 5100 psi	PA011-003	--,- €
BOTTLE 50L. 450 BAR TPED	500 bar / 7250 psi	PA011-006	--,- €

ENVIRONMENT TEMPERATURE -20°C to 50°C

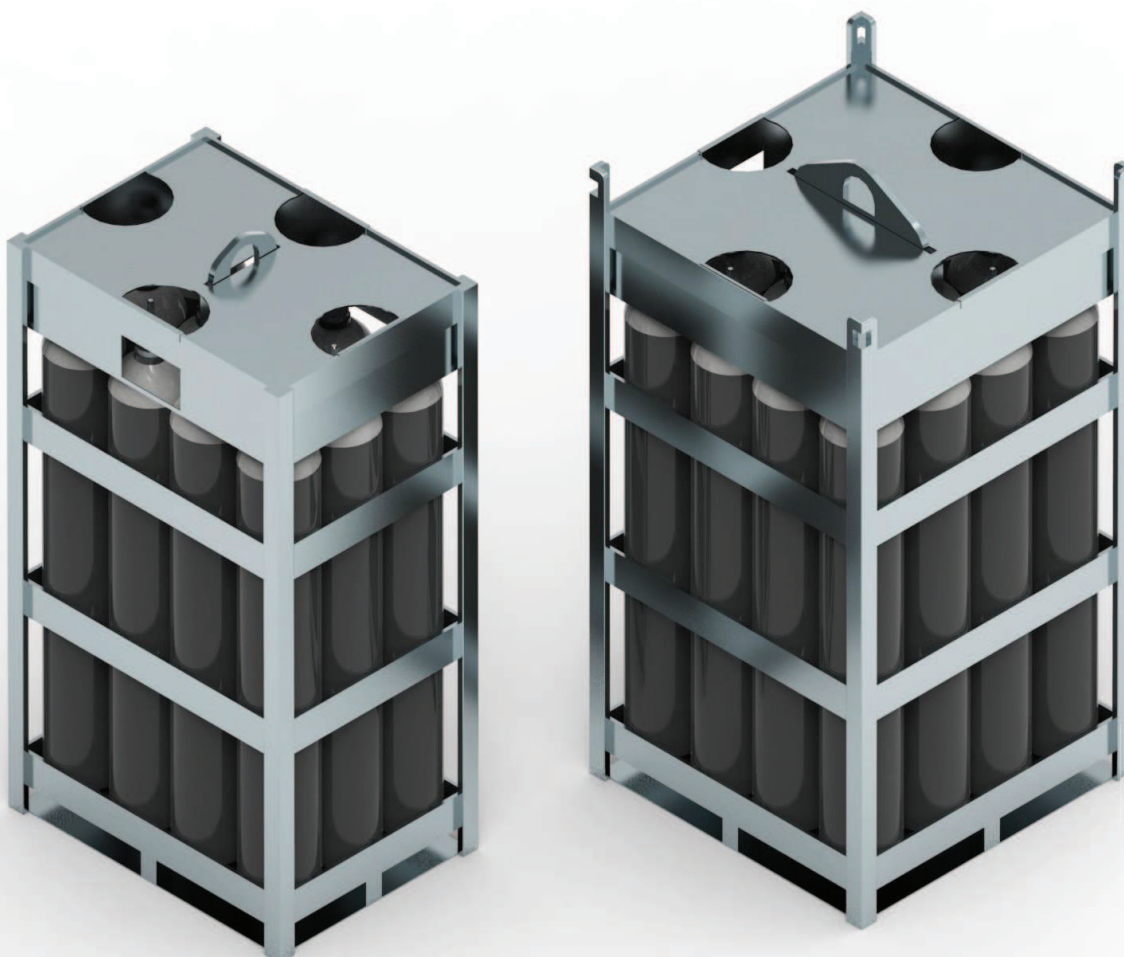
## STORAGE FOR PACIFIC M and MX



DESCRIPTION	Working Pressure	CODE	Price
STOCK FOR PACIFIC M 2 BOTTLES 50L.	300 bar / 5100 psi	PA011-008	--,- €
STOCK FOR PACIFIC MX 2 BOTTLES 50L.	300 bar / 5100 psi	PA011-009	--,- €

ENVIRONMENT TEMPERATURE -20°C to 50°C

CYLINDER PACKS



DESCRIPTION	Working Pressure	CODE	Price
CYLINDER PACK 12 BOTTLES	300 bar / 4350 psi	PA011-010	--,-- €
CYLINDER PACK 16 BOTTLES	300 bar / 4350 psi	PA011-011	--,-- €

ENVIRONMENT TEMPERATURE -20°C to 50°C

## ACCESSORIES FOR STORAGE PACKS



DESCRIPTION	CODE	Price
Connection W30x2 ISO 5145/CEN3	PA119-170	--,-- €



DESCRIPTION	CODE	Price
Reduction 25E x 1/4"G 350 BAR	PA005-013	--,-- €



DESCRIPTION	CODE	Price
Manifold G1/4" 350 BAR	PA112-099	--,-- €



DESCRIPTION	CODE	Price
Connection G1/4" 350 BAR	HR352-002	--,-- €



DESCRIPTION	CODE	Price
Connection G1/4" 350 BAR	HR350-002	--,-- €



DESCRIPTION	CODE	Price
Connection G1/4" 350 BAR	HR346-002	--,-- €

ENVIRONMENT TEMPERATURE -20°C to 50°C